

WHY YOU SHOULD BUY YOUR ENGINEERED WOOD PRODUCTS FROM CANWEL BUILDING MATERIALS:



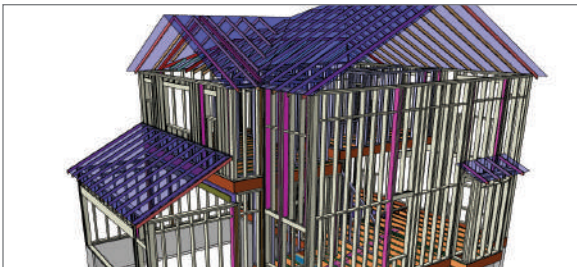
1
COMPLETE PRODUCT LINE:

- BCI® Joist, VERSA-LAM®, ALLJOIST®, VERSA-STUD®, VERSA-RIM® framing & more.
- Reliable product availability.
- Recently increased manufacturing capacity.



2
DEPENDABLE DISTRIBUTION:

- The CanWel team works with the Boise Cascade team and yours to tighten up plans, estimate your jobs and assure your desired product mix. And deliver it where and when you need it.
- CanWel and Boise Cascade have deep ties and strong, mutual relationships, all of which help you build with the right products at the right time.



3
EFFECTIVE BUSINESS TOOLS & GUIDANCE:

- BC FRAMER® is Boise Cascade's next-generation CAD and structural analysis design software.
- You can take advantage of the years of expertise at CanWel – experienced professionals who know how to use the latest Boise Cascade design and planning tools to your best advantage.
- Get close estimates fast with new formula-based whole-house estimating.



4
EASY TO DO BUSINESS WITH:

- CanWel and Boise Cascade are here for the long haul and looking for ways to serve you even better.
- CanWel people are committed to being successful by doing our part to help you succeed.
- We look for ways to say "Yes" and work with you to create a long-term relationship that works.
- Should a problem arise, working together we figure out how to solve it.



Boise Cascade
Engineered Wood Products
Great products are only the beginning.®

www.BCewp.com or 800-232-0788